

# COLOR SELECTION CHART STANDING SEAM / ARCHITECTURAL



35 YEAR LIMITED PANEL & TRIM WARRANTY TRINAR®



 Polar White



 Sahara Tan



Burnished Slate



Hawaiian Blue



 Colonial Red



 Ash Gray



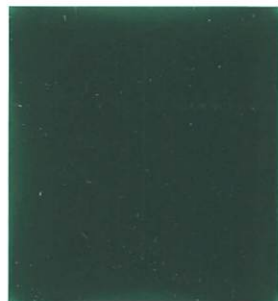
 Solar White



 Light Stone



 River Teal



Kelly Green



Deep Blue



 Patina Green

# Standing Seam / Architectural



**AkzoNobel**  
Tomorrow's Answers Today

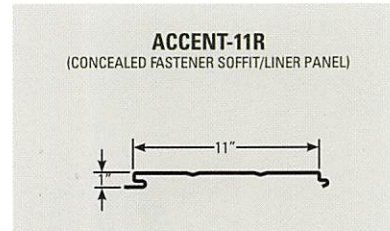
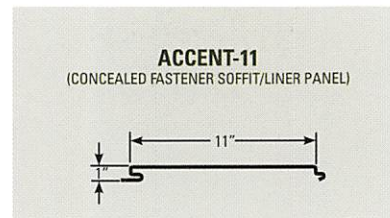
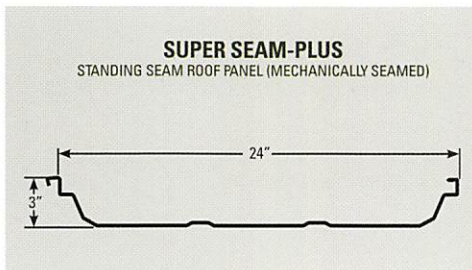
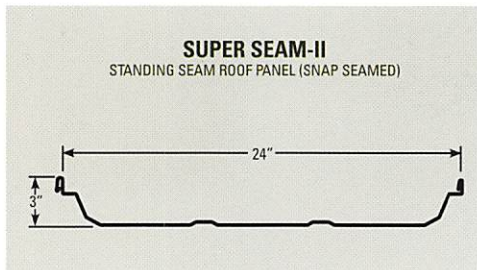
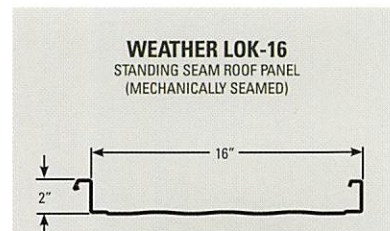
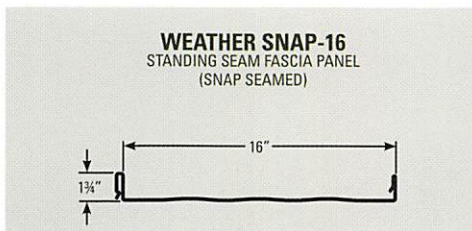
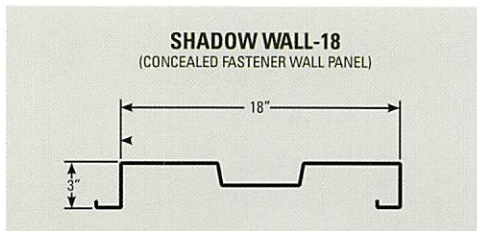


# STANDING SEAM / ARCHITECTURAL COLOR SELECTION

	Polar White	Sahara Tan	Burnished Slate	Hawaiian Blue	Colonial Red	Ash Gray	Solar White	Light Stone	River Teal	Kelly Green	Deep Blue	Patina Green
24 Gauge 35-Yr KYN	▲	▲	▲	▲	▲	▲	▲	▲				
24 Gauge 35-Yr KYN									★	★	★	★

▲ Premium TRINAR (KYNAR 500® / HYLAR 5000®) finish. Available in any quantity.

★ Premium TRINAR (KYNAR 500® / HYLAR 5000®) finish. (MINIMUM QUANTITY OF 200 SQUARES REQUIRED) Additional Lead time may apply, call for details.

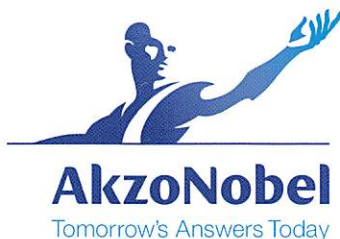


Unpainted GALVALUME PLUS® is available in 24 Gauge material.

The following color name prefixes are used to identify different paint systems:

KYN = KYNAR® / TRINAR® / HYLAR®

TRINAR® is a registered trademark of AkzoNobel.  
KYNAR 500® is a registered trademark of Arkema, Inc.  
HYLAR 5000® is a registered trademark of Solvay Solexis, Inc.



**ENERGY STAR APPROVED COLORS** ~ Colors indicated with the Energy Star logo have been approved by Energy Star and can help save on your energy costs.



**GREEN** ~ We believe in helping the environment, which is why all of our steel products are made from 32-59% recycled materials and are 100% recyclable..

**LEED POINTS** ~ Our products qualify for LEED points through recycle content, emissivity and reflectivity ratings and Energy Star.

Actual colors may vary from sample shown, color chips are available upon request. Our colors may not match those of other companies despite the color names being identical. Colors may not match the color of existing adjacent panels, even if the panels are our standard colors. Please contact your salesperson for complete details.



[www.encoresteelbuildings.com](http://www.encoresteelbuildings.com)

(866) 614-9153